



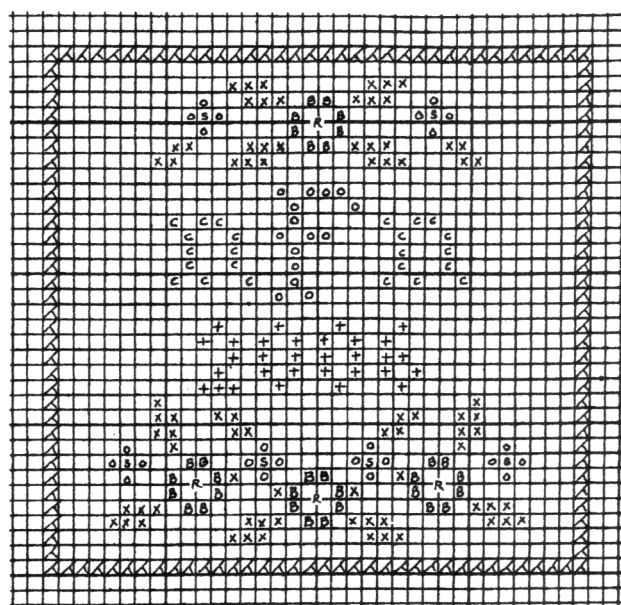
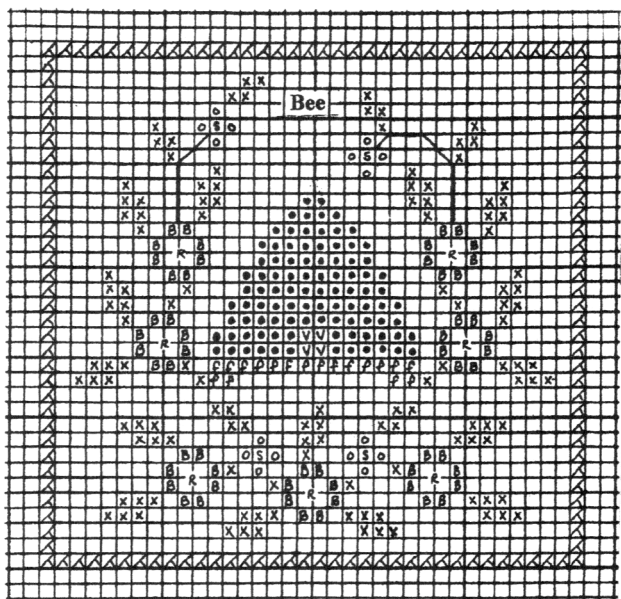
Honey Pin Cushion or Sachet

Model stitched on 32-ct. Linen
 Stitch Count: 36 W x 35 H
 Design Area: 2 5/8" x 2 5/8"
 Cut linen: 5" x 5" (two pieces)

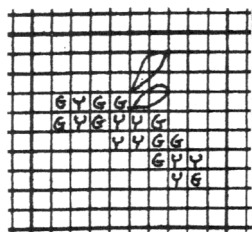
This design can be used as a pin cushion, sachet, door knob ornament or could also be framed. Just have fun with the design.

Graph 1, Front

Graph 2, Back



Bee



Work bee in Cross Stitch, 1 strand floss over one linen thread following the symbols and other directions below.

Each square on the main graph represents two linen threads. Each square on the graph for the bee, represents one linen thread and the bee is worked in Cross Stitch, 1 strand floss over 1 linen thread. Stitches are worked using 1 strand floss unless otherwise noted in the instructions below. Work the specialty stitches using "The Gallery of Stitches" included in the "Classroom Information" section of this web site. A list of thread colors are given for The Gentle Art Sampler Threads, which were used on the model and DMC 6-strand embroidery floss shown in parentheses. The Gentle Art Sampler Threads are overdyed and give a variation of subtle shades with each stitch. Using DMC will not acquire the overdyed results.

Honey Pin Cushion or Sachet

The Gentle Art Sampler Threads (DMC 6-strand Embroidery Floss in parentheses)

- [<] Currant, Four-sided (902)
- [R] Currant, Rice, 2 strands (902)
- [X] Mountain Mist, Smyrna Cross (501)
- [O] Liberty, Raised Knot (932)
- [S] Butternut Squash, Smyrna Cross (726)
- [+] Butternut Squash, Horizontal Tied Cross Stitch (726)
- [B] Antique Rose, Smyrna Cross (223)
- [C] Antique Rose, Vertical Tied Cross Stitch (223)
- [•] Buttercrunch, Greek Cross Stitch (3827)
- [f] Black Crow, Horizontal Tied Cross Stitch (310)
- [G] Black Crow, Cross Stitch over 1 linen thread (310)
- [Y] Butternut Squash, Cross Stitch over 1 linen thread (726)

Other:

- 1) Work wings on bee in Lazy Daisy, Cornflower (3325), 2 strands.
- 2) Work legs on bee in Double Running or Backstitch, Black Crow.
- 3) Work initials and date on back using your favorite alphabet and numerals.
- 4) Refer to The Stitch Gallery on how to lace the front and back using the Four-sided stitches. Use two strands Currant (902). Working on the wrong side of your linen, anchor your thread in the seam allowance next to the fold line using a running stitch. The running stitch is worked over and under two linen threads for approximately one inch bringing needle and thread up to the top of your work at the base of one side. Lace from one side, across the top, and down the second side, leaving the bottom open. Fill the pin cushion and finish closing the Four-sided stitches across the bottom.